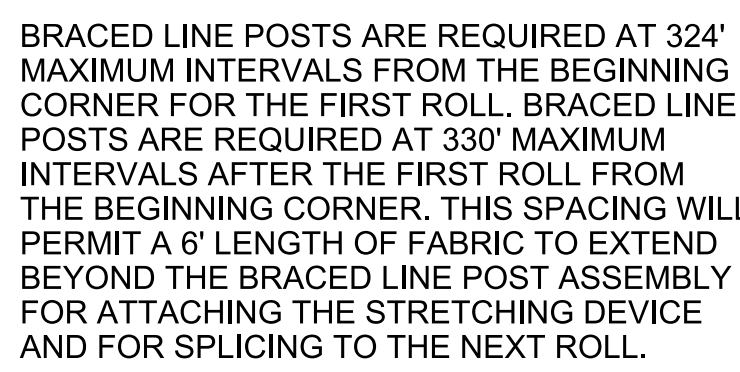
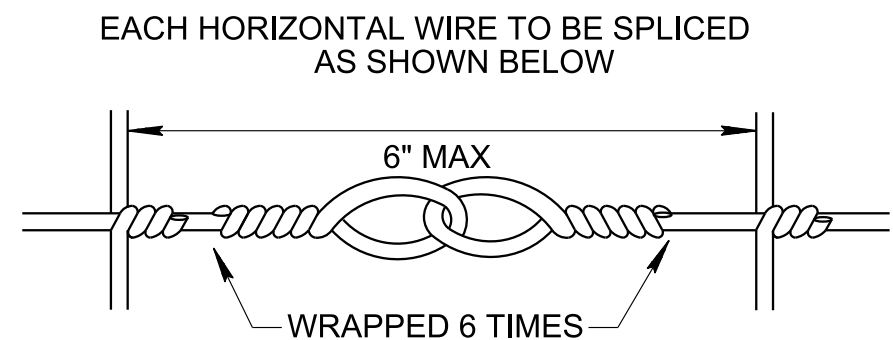


REV. 11-15-17: ADDED LINE POST NOTE.
CHANGED R.O.W FENCE LINE STYLE.
CHANGED FONT. REWORDED THE
BRACED LINE POST NOTE REGARDING
MAXIMUM INTERVALS

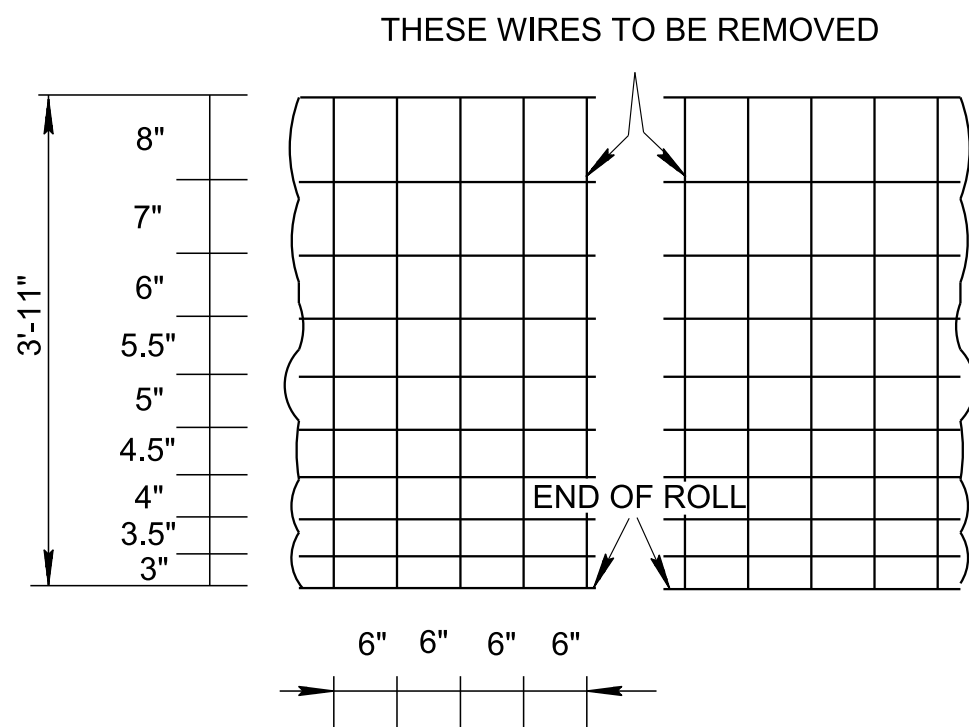


* NOTE REGARDING TIE WIRES:
NO. 9 GAUGE DOUBLE STRAND GALVANIZED
TIE WIRE TWISTED TO SINGING TIGHTNESS,
DOUBLE WRAPPED AROUND POSTS.

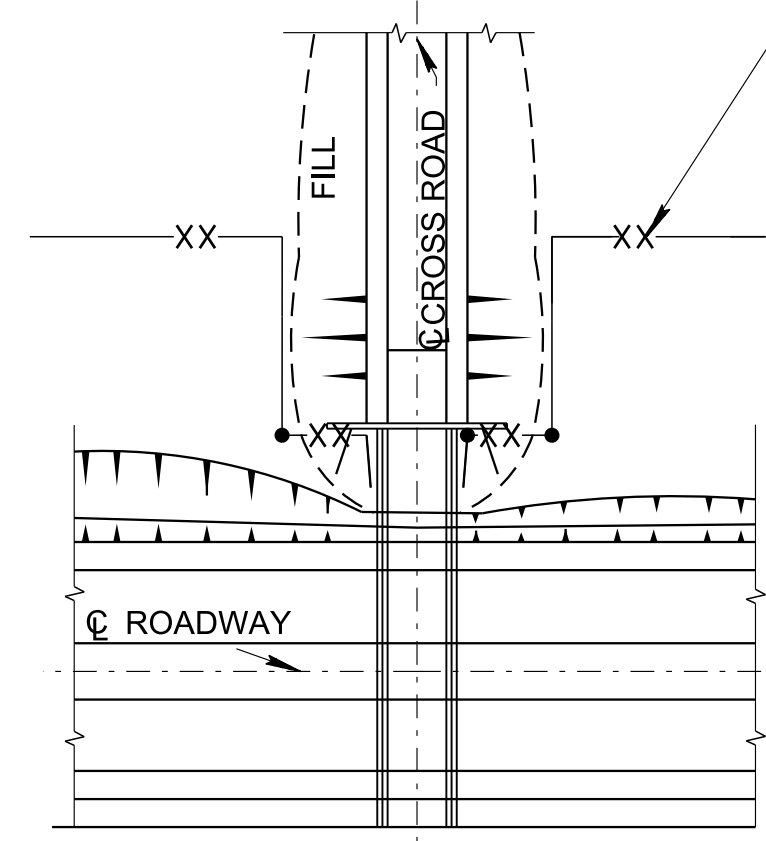


SPLICE DETAIL FOR FENCE

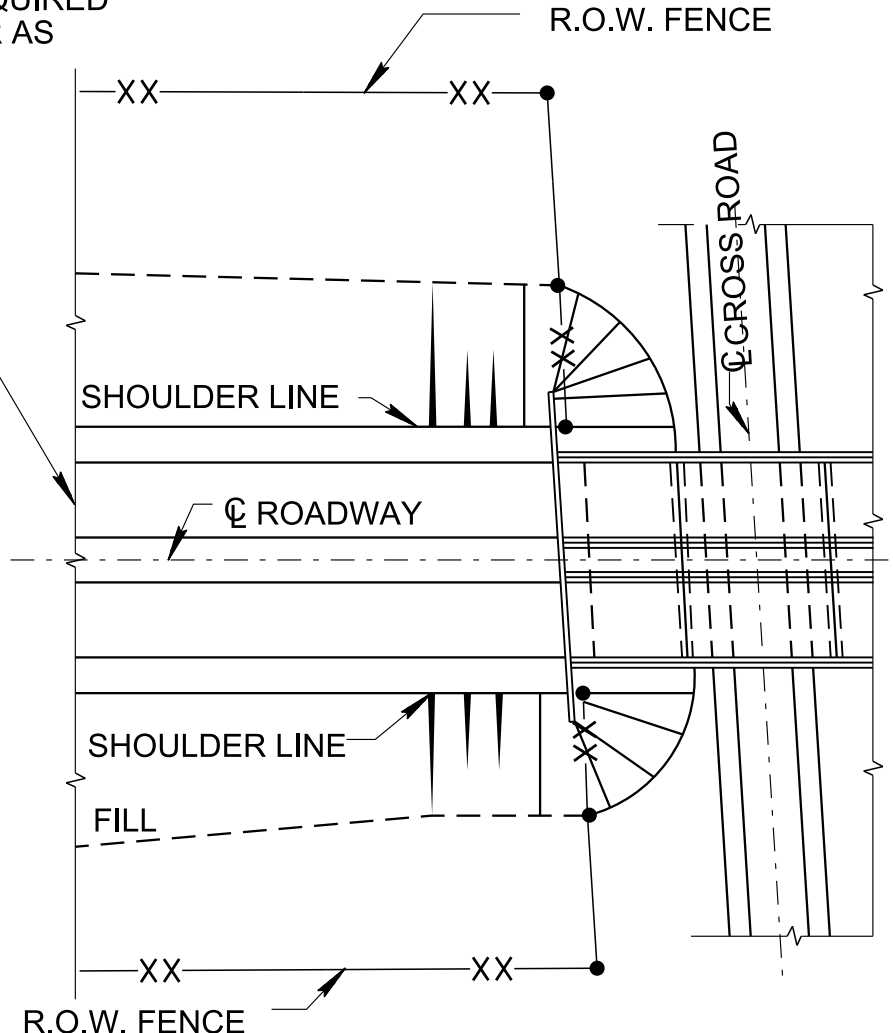
NOTE: THESE INSTALLATION SCHEMES ARE TYPICAL AND ARE NOT TO BE CONSTRUED AS REPRESENTATIVE OF ALL CONDITIONS WHICH WILL BE ENCOUNTERED. CONSTRUCTION MAY BE VARIED AS REQUIRED TO MEET FIELD CONDITIONS AND/OR AS DIRECTED BY ENGINEER.



FARM FENCE WIRE DETAILS



PLAN
ROADWAY UNDER CROSS ROAD



PLAN
ROADWAY OVER CROSS ROAD

GENERAL NOTES

- (A) GALVANIZED STEEL WOVEN WIRE MEETING THE REQUIREMENTS OF ASTM A-116 FOR NO. 11 FARM, DESIGN NO. 1047-6-11, CLASS III COATING OR GALVANIZED HIGH TENSILE STRENGTH STEEL WOVEN WIRE MEETING THE REQUIREMENTS OF ASTM A-116 FOR NO. 12½ FARM DESIGN, CLASS III COATING EXCEPT THAT THE TOP AND BOTTOM STRAND SHALL BE 10½ GAUGE AND THE YIELD STRENGTH SHALL BE EQUIVALENT TO NO. 11 FARM DESIGN 1047-6-11.
- (B) THE BARBED WIRE SHALL CONSIST OF 2 NO. 12½ GAUGE TWISTED STEEL LINE WIRES WITH NO. 14 GAUGE 4-POINT BARBS SPACED NOT MORE THAN 5 IN. APART. IT MAY BE EITHER GALVANIZED OR ALUMINUM COATED. THE GALVANIZED WIRE SHALL MEET THE REQUIREMENTS OF ASTM A-121, CHAIN LINK FENCE GRADE. AT THE OPTION OF THE CONTRACTOR, HIGH TENSILE STRENGTH WIRE WITH BARB SPACING AS DESIGNATED ABOVE, MAY BE USED. IF THE CONTRACTOR ELECTS TO FURNISH HIGH TENSILE STRENGTH WIRE, IT SHALL MEET THE REQUIREMENTS OF ASTM A-121, CHAIN LINK FENCE GRADE FOR THE RESPECTIVE WIRE SIZE.
- (C) SEE STANDARD DRAWING S-FG-20 FOR DETAILS OF FENCING OVER DITCHES FOR WATER CROSSING DETAILS.
- (D) SEE STANDARD SPECIFICATIONS, SUB-SECTION 707.05 REGARDING FURNISHING AND PLACING ADDITIONAL BRACED LINE POSTS WHERE TERRAIN IS IRREGULAR.
- (E) FENCE TO BE ANGLED TO EDGE OF CULVERTS AS SHOWN ON PLANS OR AS DIRECTED BY THE ENGINEER.
- (F) PAYMENT WILL BE MADE UNDER:
ITEM NO. 707-03.01 STOCK FENCE PER LIN. FT.
ITEM NO. 707-03.02 END, BRACED LINE, CORNER POST ASSEMBLY (STOCK FENCE) PER EACH

☐ MINOR REVISION -- FHWA
APPROVAL NOT REQUIRED.

**STATE OF TENNESSEE
DEPARTMENT OF
TRANSPORTATION**

STANDARD
RIGHT-OF-WAY
STOCK FENCE